



# BRIDGES





# What are bridges made of?



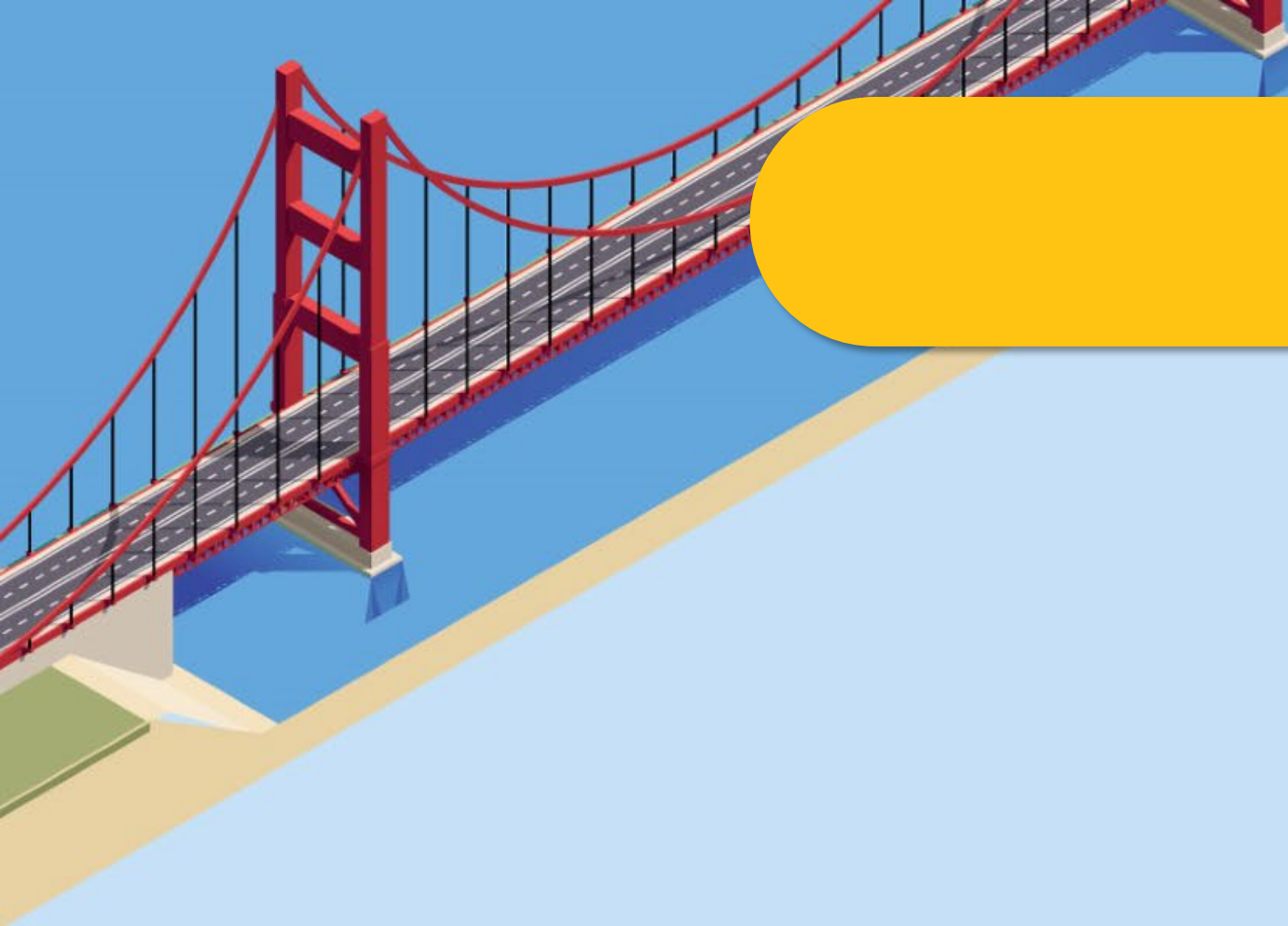
**Timber**



**Concrete**



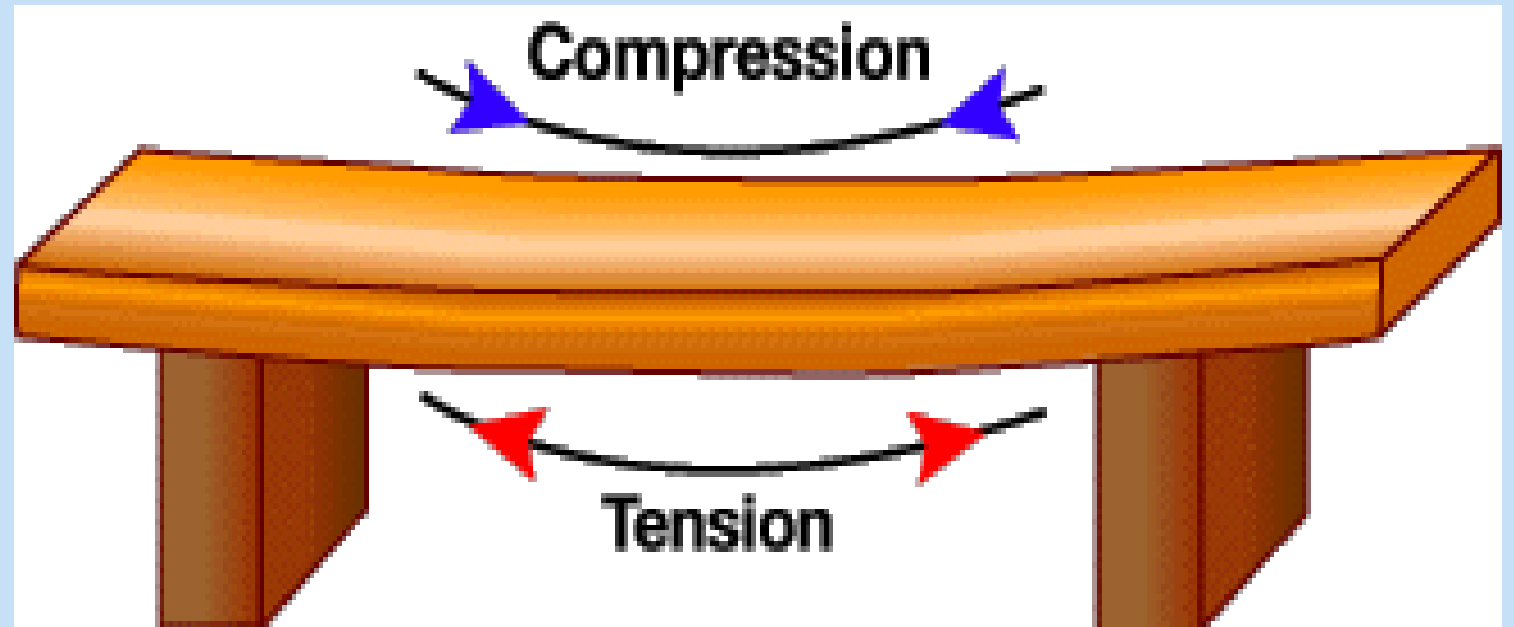
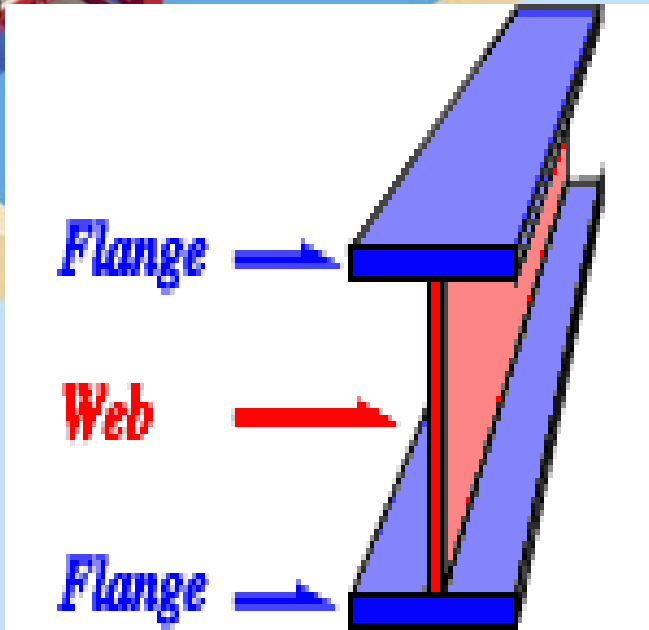
**Steel**



## Types of bridges:

- **Beam/Girder Bridge**
- **Truss Bridge**
- **Arch Bridge**
- **Suspension Bridge**
- **Cable Stayed Bridge**

# Beam/Girder Bridge



# Beam/Girder Bridge

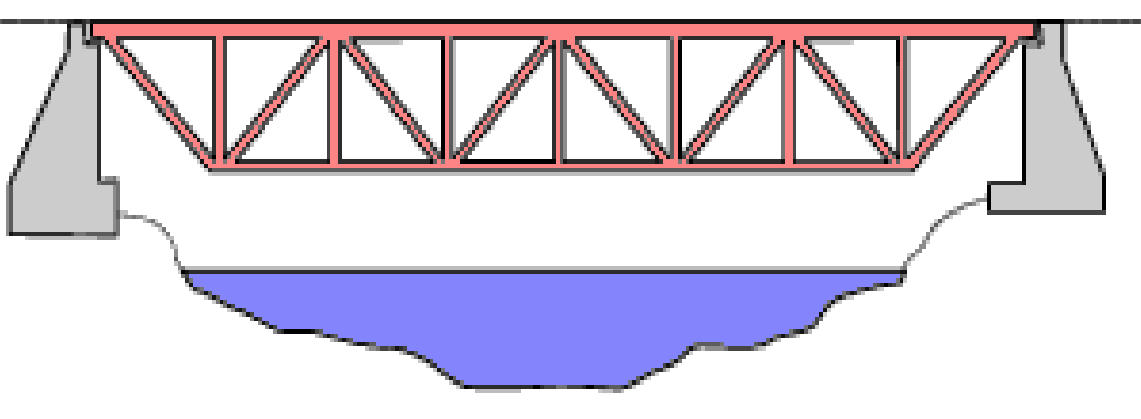
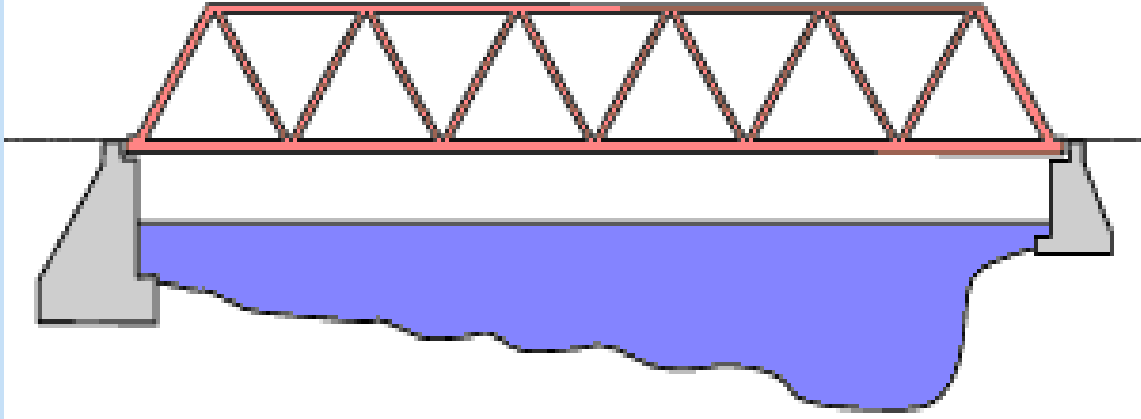


**A Standard Beam and Girder Bridge in Northern Kentucky**





# Truss Bridge



# Truss Bridge (Through)



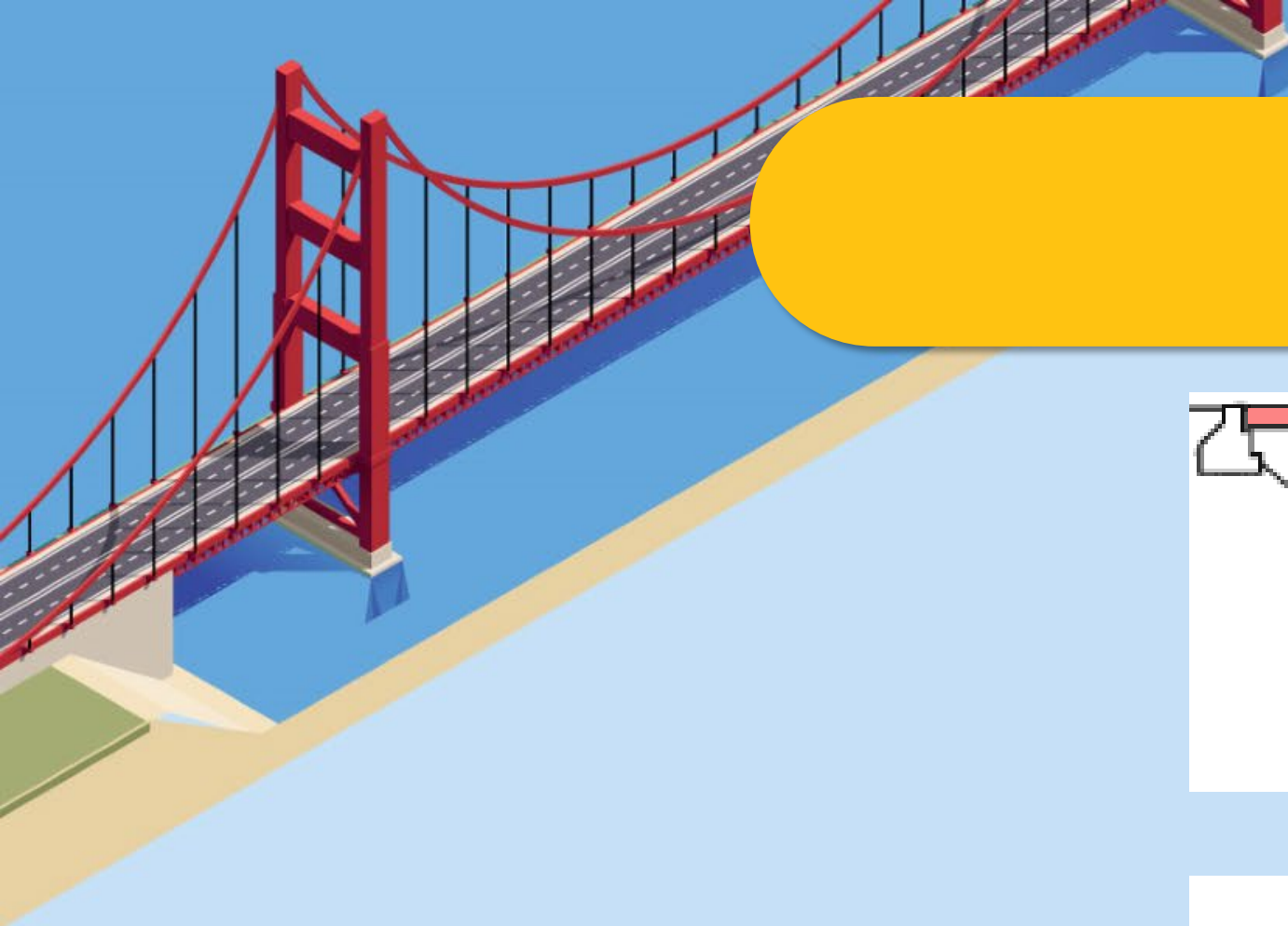
**Purple People Bridge in Northern Kentucky**



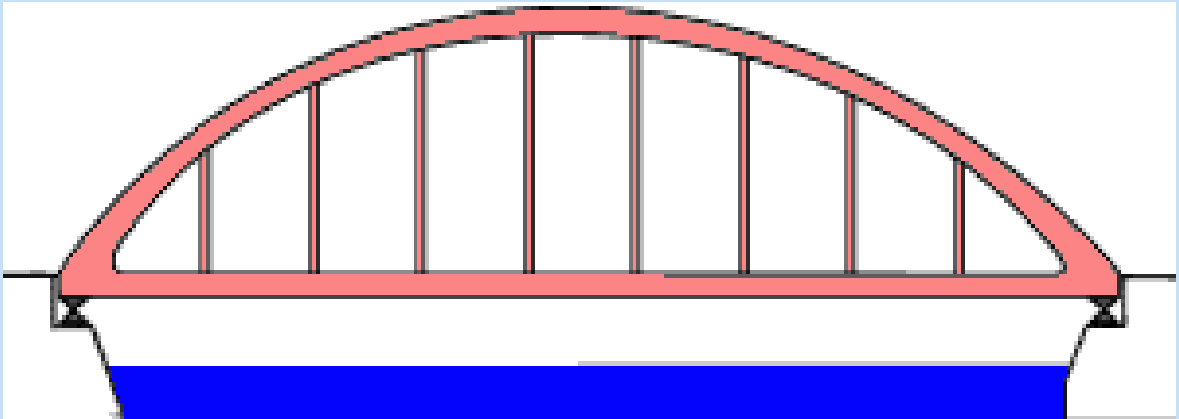
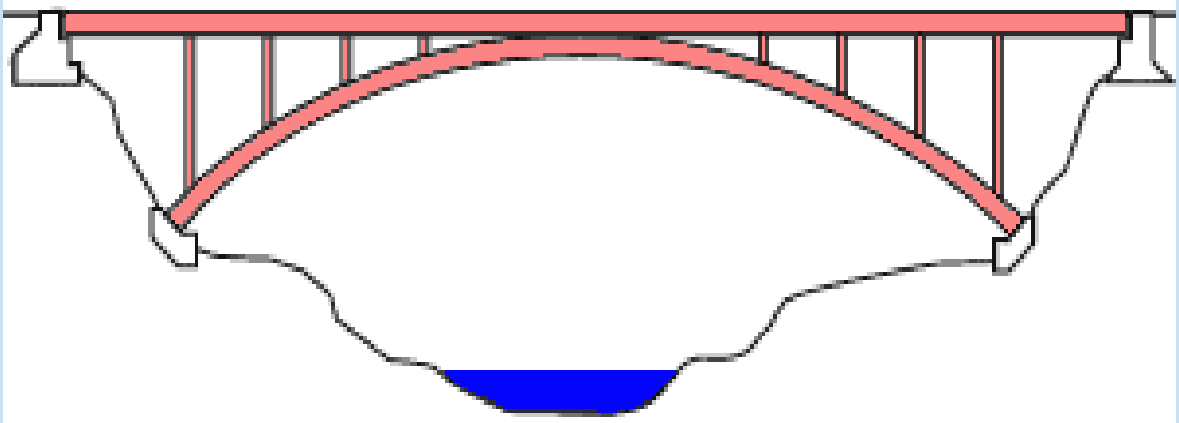
# Truss Bridge (Deck)



**Clay's Ferry Bridge**  
(Halfway between Lexington and Richmond on I-75)



# Arch Bridge





# Arch Bridge (Through)

**Eggner Ferry Bridge**  
(Over Kentucky Lake near  
Paducah, KY)



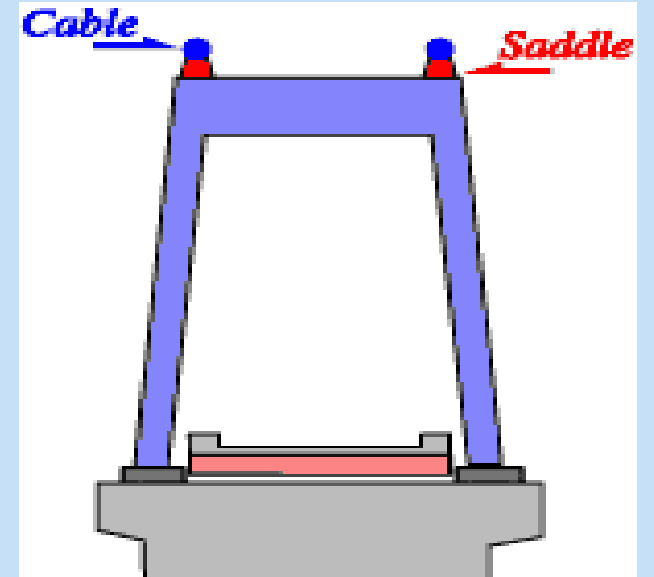
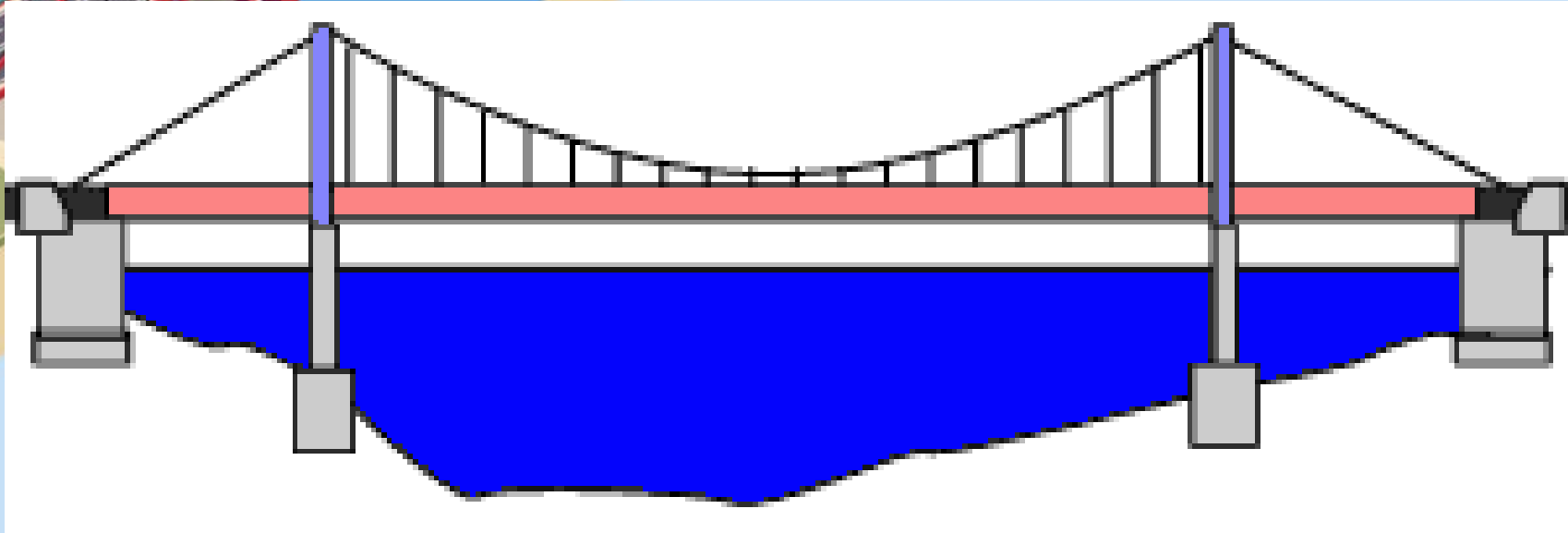
# Arch Bridge (Deck)



**Deck Arch Bridge**  
**in Northern Kentucky near Cincinnati**



# Suspension Bridge



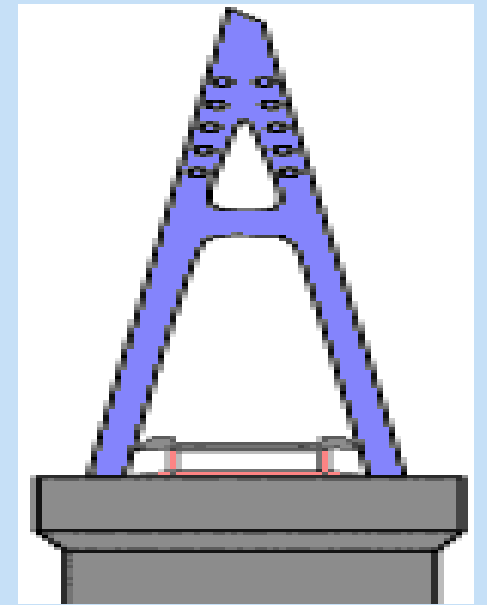
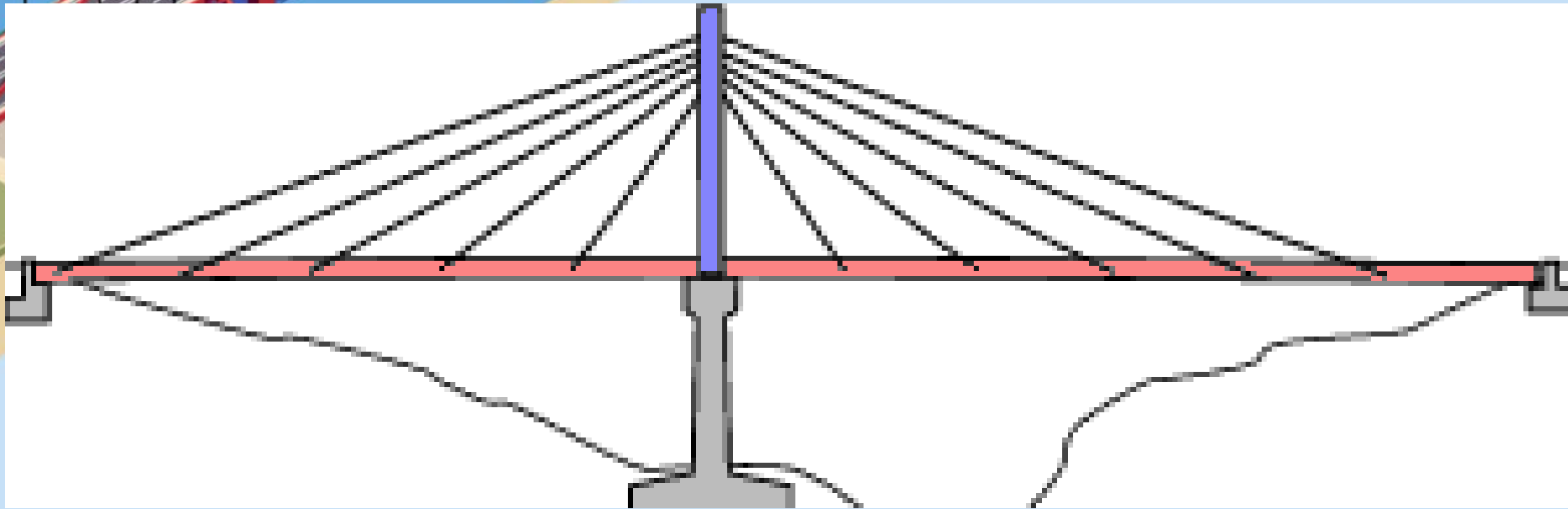
# Suspension Bridge



**Roebling Suspension Bridge**



# Cable Stayed Bridge



# Cable Stayed Bridge

**William H.  
Harsha Bridge  
(Maysville, KY)**

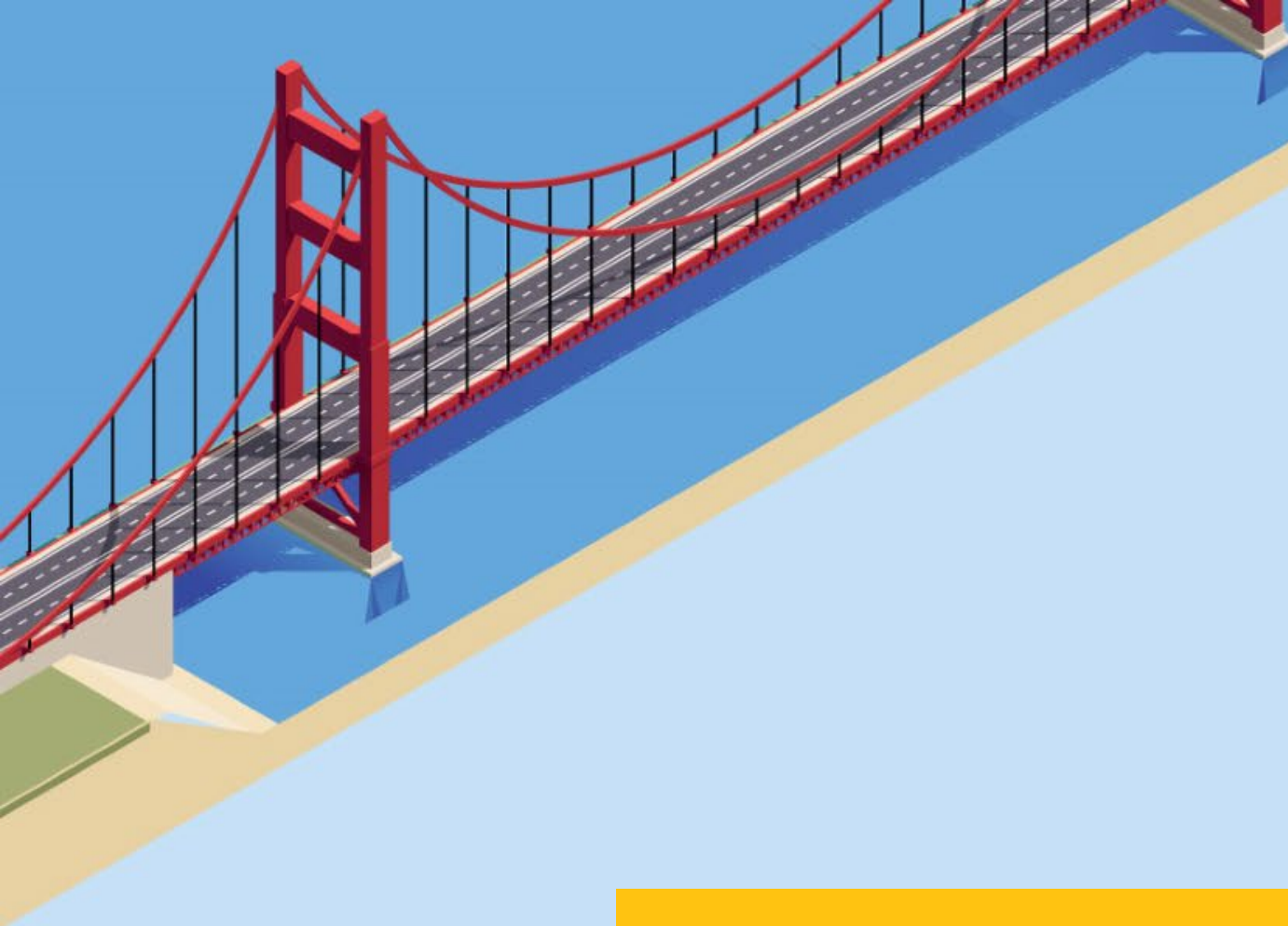




# Cable Stayed Bridge



**Lewis and Clark Bridge (Louisville, KY)**



**[Email: KYTC.KEEN@ky.gov](mailto:KYTC.KEEN@ky.gov)**

**Website: [transportation.ky.gov/Education/Pages/KEEN.aspx](https://transportation.ky.gov/Education/Pages/KEEN.aspx)**